

1



1. Picture of tree showing dying parts.

2



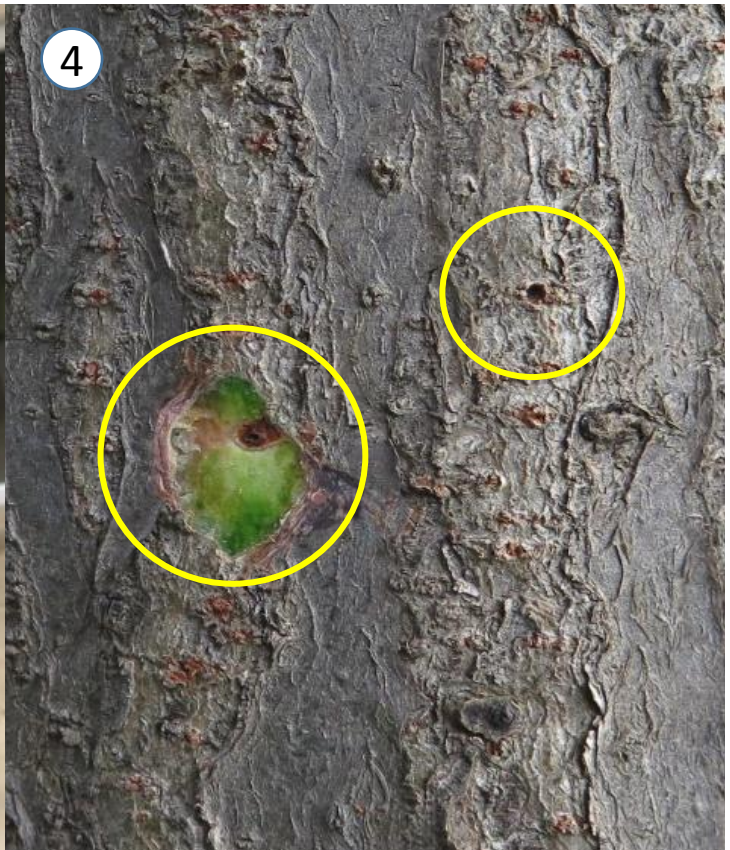
2. Picture to identify tree species including bark and leaves, and if present, flowers and seeds.

3



3. Zoom in on affected area to show external symptoms around entrance holes.

4



4. Zoom in on holes, scrape bark off one hole to show tunnel.



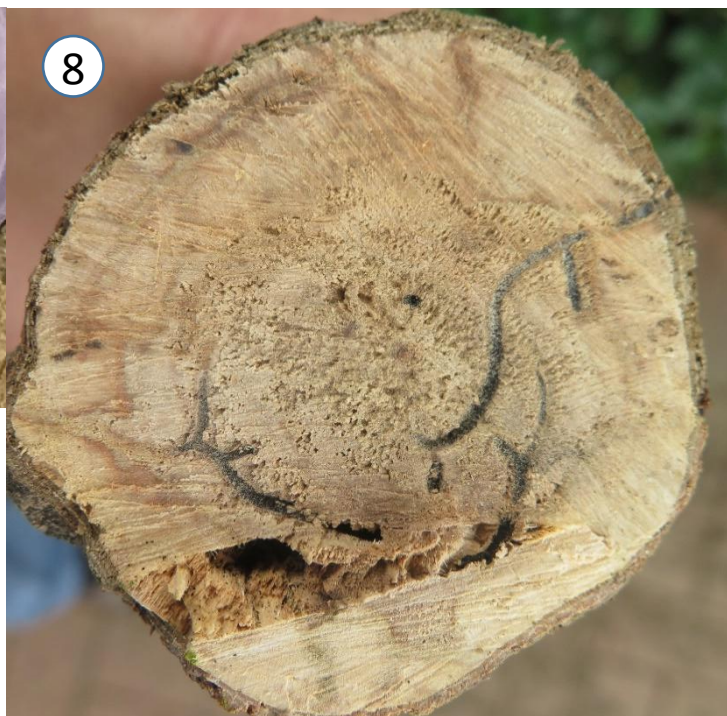
5. Use a knife or chisel to cut a square of bark around the entrance hole.



6. Carefully peel the bark to expose the tunnels penetrating the sapwood and the fungal stain surrounding it.



7. Photograph the beetle alongside something like a toothpick, match or ball point pen to show the size of the beetle.



8. If possible or available, photograph a cross section of the trees showing the structure of the beetle tunnels.